

4/25/2019

Subject: **Grass Valley Charter School Site work**
Grass Valley School District
Architects Project No. 2018044

DSA File No. 29-11
DSA Application No. 02-117269

ADDENDUM NO. 1
(Total # of Pages - 4)

CHANGES AND/OR CLARIFICATION'S OF THE DRAWINGS AND SPECIFICATIONS AS FOLLOWS:

SPECIFICATIONS

No Changes

DRAWINGS

CIVIL

No Changes

ARCHITECTURAL

A2.00 Addition of accessible drop off. See Attachment AD1 - 2 AND AD1 - 3

STRUCTURAL

No Changes

MECHANICAL

No Changes

PLUMBING

No Changes

ELECTRICAL

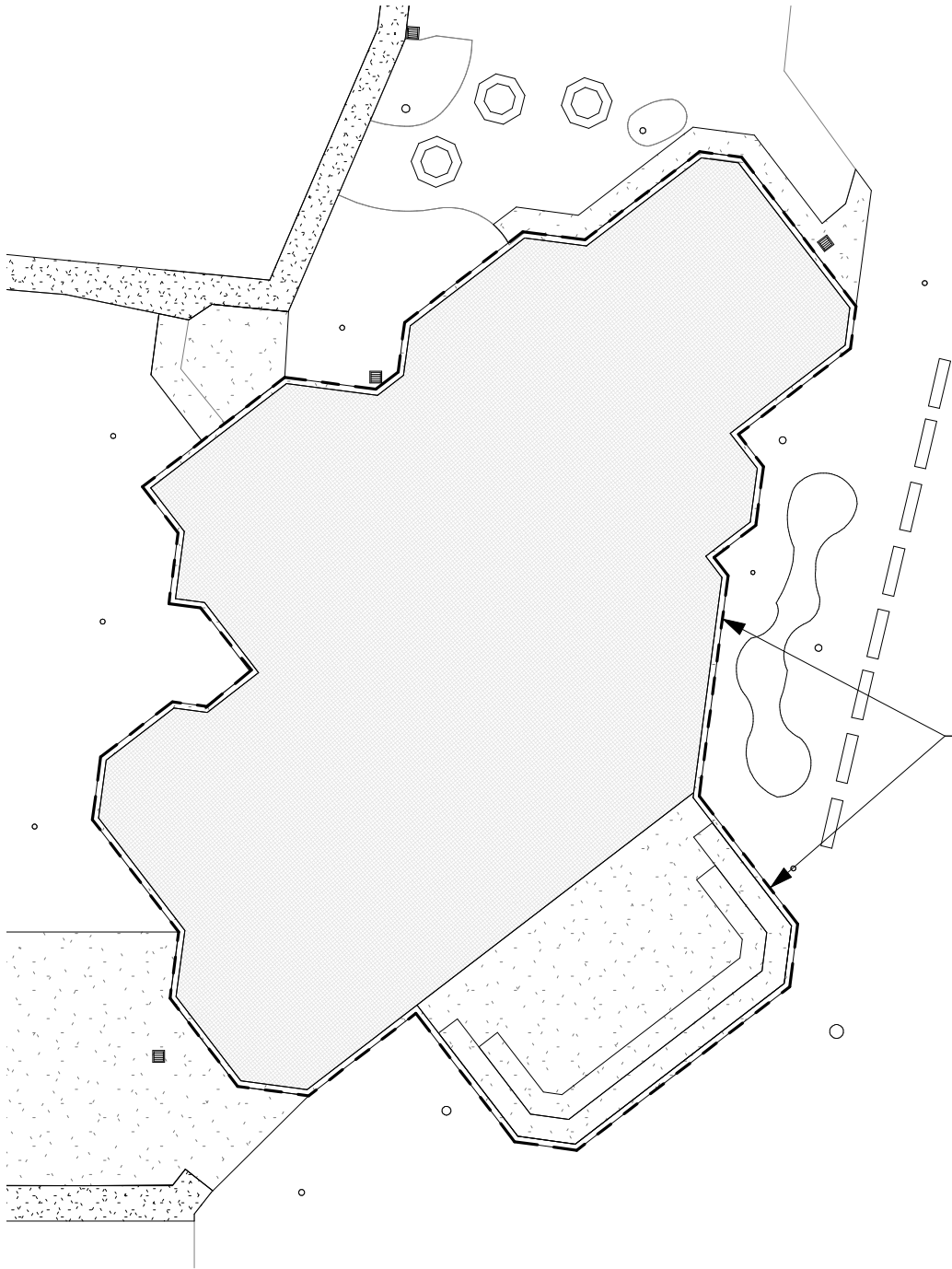
No Changes

Attachment:

AD1 – 1

AD1 – 2

AD1 - 3



FROM THE OUTSIDE FACE OF CURBED AREA AS SHOWN, THE PLAY STRUCTURE, SURFACING, RELATED CURBS AND PAVING, UNDERGROUND UTILITIES, DEMO OF THE EXISTING STRUCTURE IS BY OTHERS.

1 PLAYSTRUCTURE SCOPE

SCALE: 1" = 30'-0"

aedis
architects

387 S. 1st Street, Suite 300
San Jose, CA., 95113

tel: (408) 300 - 5160
fax: (408) 300 - 5121

GRASS VALLEY CHARTER SCHOOL
MODERNIZATION 2019
GRASS VALLEY SCHOOL DISTRICT

FILE NO.: 29-11

APPL NO.: 02-117269

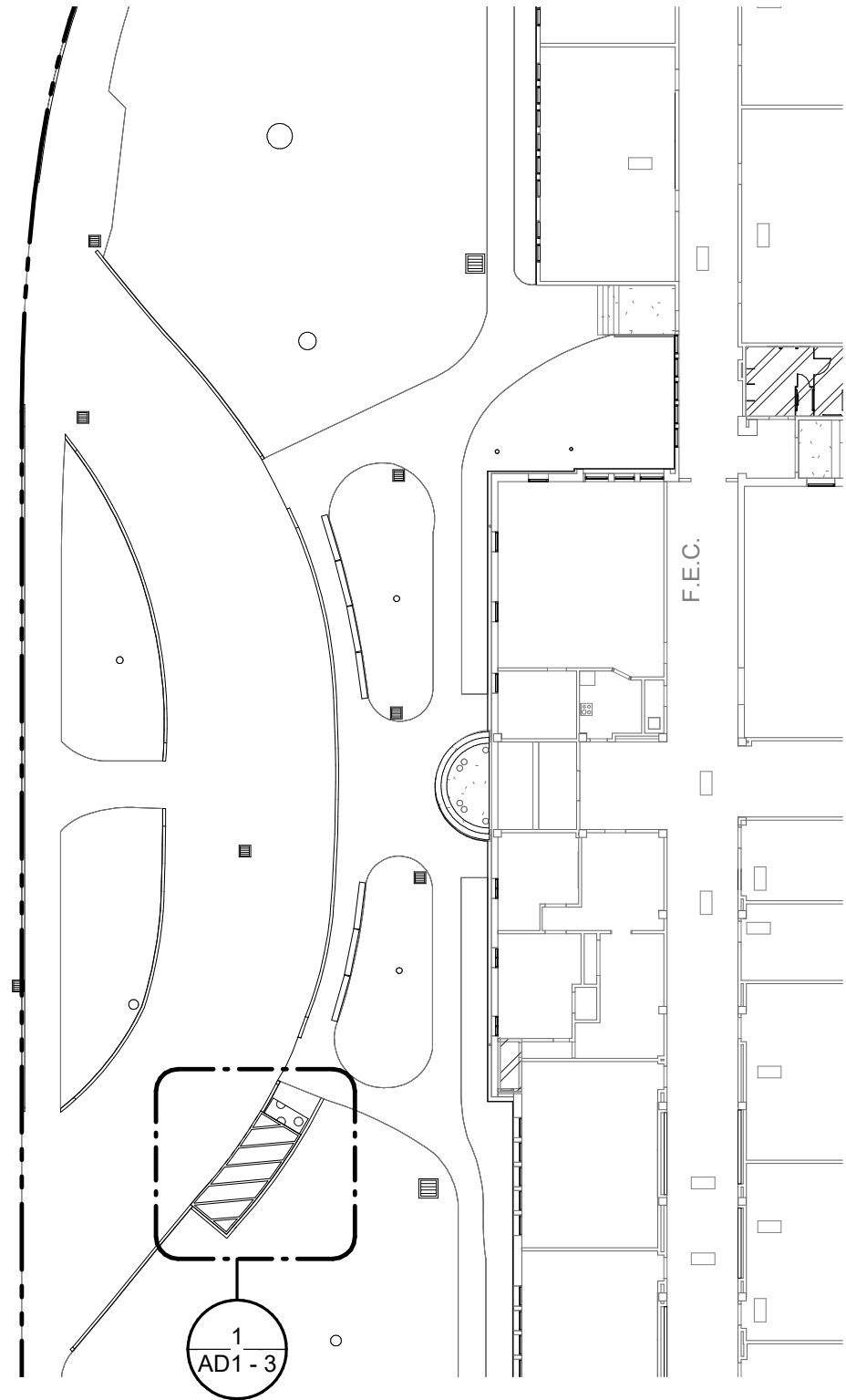
JOB NO. 2018044

DATE 04/25/19

SHEET

AD1 - 1

S. AUBURN ST



aedis
architects

387 S. 1st Street, Suite 300
San Jose, CA., 95113

tel: (408) 300 - 5160
fax: (408) 300 - 5121

**GRASS VALLEY CHARTER SCHOOL
MODERNIZATION 2019
GRASS VALLEY SCHOOL DISTRICT**

FILE NO.: **29-11**

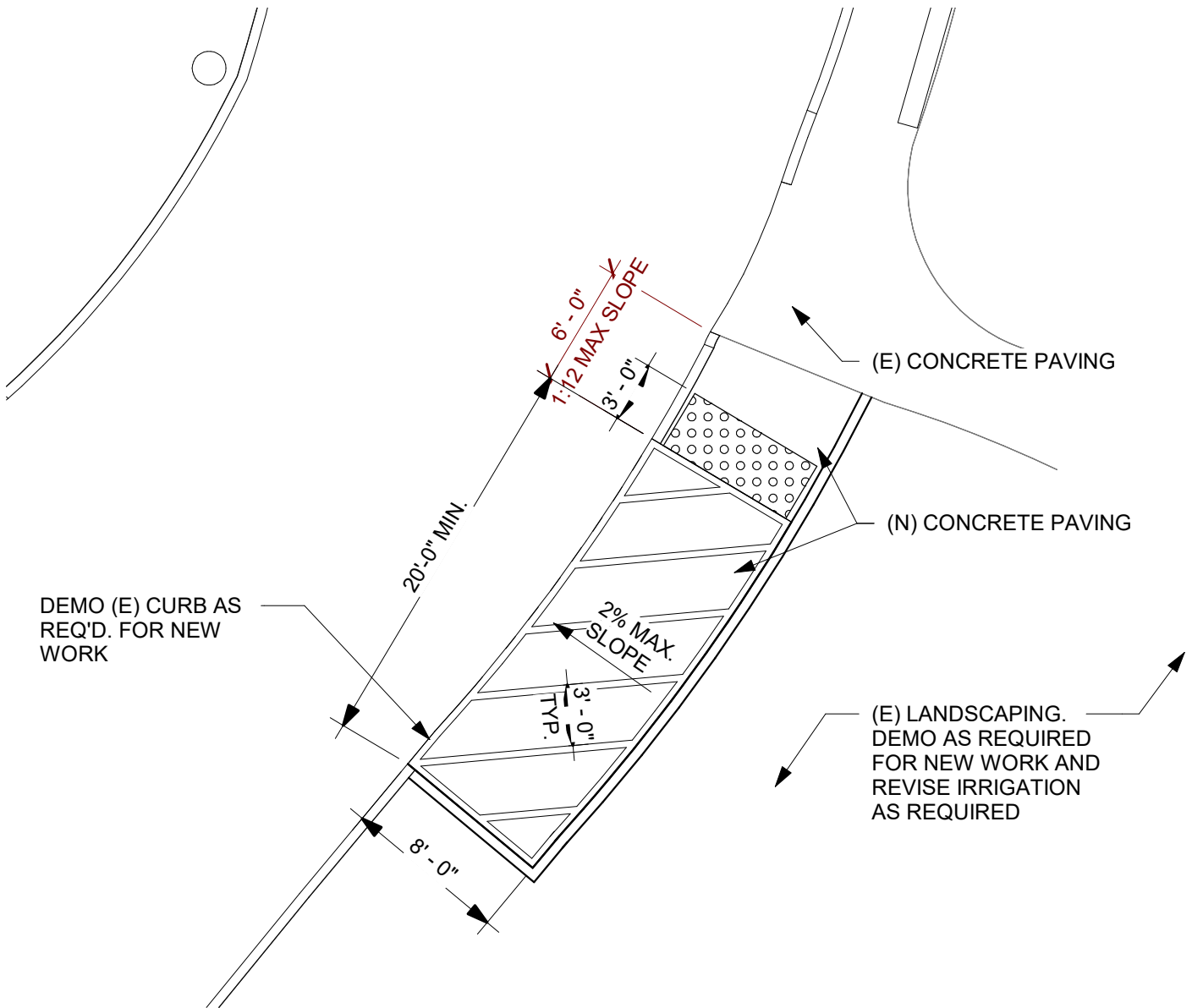
APPL NO.: **02-117269**

JOB NO.: **2018044**

DATE **04/25/19**

SHEET

AD1 - 2



aedis
architects

387 S. 1st Street, Suite 300
San Jose, CA., 95113

tel: (408) 300 - 5160
fax: (408) 300 - 5121

**GRASS VALLEY CHARTER SCHOOL
MODERNIZATION 2019
GRASS VALLEY SCHOOL DISTRICT**

FILE NO.: **29-11**

APPL NO.: **02-117269**

JOB NO. **2018044**

DATE **04/25/19**

SHEET

AD1 - 3